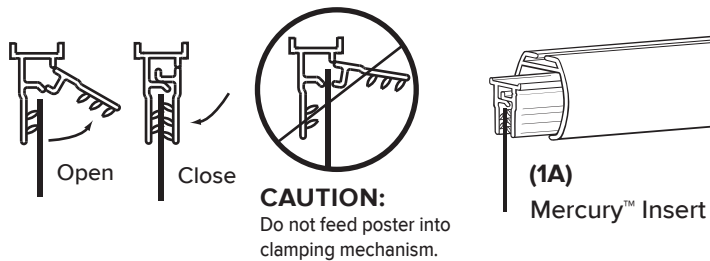


Your Elite™ Aluminum Banner Hanging system is available with three different banner hanging options. This instruction sheet covers all three options. Match your banner hanging option with the related assembly instructions below.

1A - Banner Hanger with Mercury™ Insert:

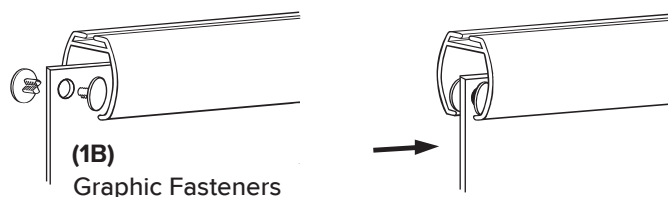
Start at one end of Mercury™ Banner Hanger. Pry open hinged side. Work your way along Banner Hanger until it is open. Insert top of banner, snap shut Banner Hanger to secure banner in place. See illustration (1A) to determine how far to insert banner into banner hanger. Inserting banner too far into banner hanger may damage its hinge.



1B - Graphic Fasteners:

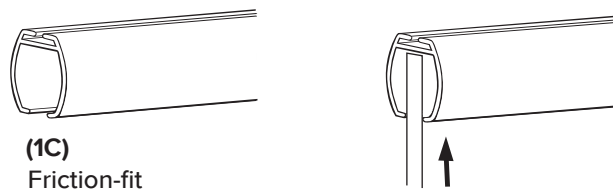
Insert fasteners through holes in graphic. Press front and back fastener together to lock in place. Fasteners will hang from ledge inside Aluminum Housing.

After sign is attached to fasteners, slide fasteners into Aluminum Housing.

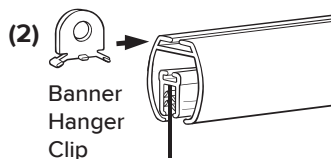


1C - Friction-fit:

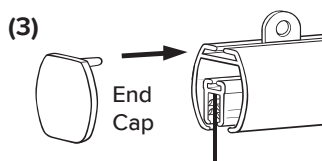
Slide 3/16" thick foamboard up into Aluminum Housing. Friction will hold the board in place.



- 2 - Slide two Banner Hanger Clips into top track of Aluminum Housing.

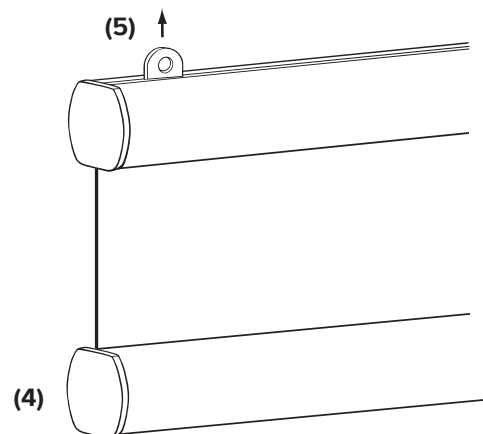


- 3 - Insert End Caps into top track at each end of Aluminum Housing.



- 4 - **Optional:** Add a second banner hanger to the bottom of the sign.

- 5 - Hang banner hangers with necessary hardware.



20190410